

Address Modes

Direct Address

Value of expression is the address in internal directly-addressable address space of the operand

```
MOV  A, 23
INC  COUNT
MOV  COUNT, A
```

Indirect

Content of a specified register is the the address of the operand

```
INC  @R0 ; increments the memory location stored in R0
```

Note: this is the only way to get at memory locations above 7F. If direct addressing is used for memory locations > 7F, special function registers will be accessed, not the memory locations.

See page 3 of 80C51 Family Architecture print off

Register

Operand is in one of the registers R0-R7

Immediate Addressing Mode

(Source operand only)

```
MOV  A, #100 ; # <- immediate addressing mode

MOV  R1, #30H ; Puts 30 into R1
INC  @R1      ; increments memory location 30
INC  R1       ; R1++. R1 now equals 31
DEC  @R1      ; decrements memory location 31
```

Operand is part of the instruction

Indexed Address Mode

Used to move data FROM code memory TO/FROM external data

```
@A + PC ; Program Counter
@A + DPTR ; Data Pointer
```

16-Bit Arithmetic

```
XLO EQU 40H
XHI EQU 41H
YLO EQU 42H
YHI EQU 43H
```

Add Two 16-Bit Values ($XVAL = XVAL + YVAL$)

```
MOV A, XLO
ADD A, YLO
MOV XLO, A
MOV A, XHI
ADDC A, YHI
MOV XHI, A
```

Add 16-Bit Value and a Constant ($XVAL = XVAL + 5$)

```
MOV A, XLO
ADD A, #5
MOV XLO, A
MOV A, XHI
ADDC A, #0
MOV XHI, A
```

Subtract Two 16-Bit Values ($XVAL = XVAL - YVAL$)

```
MOV A, XLO
SUBB A, YLO
MOV XLO, A
MOV A, XHI
SUBB A, YHI
MOV XHI, A
```

Multiplication and Division

Multiplication ($X * Y$)

Multiplies value in the accumulator (8-bit) by the value in the B SFR (8-bit) and leaves 16-bit product in B(MSB) and A (LSB)

```

X    EQU    40H
Y    EQU    41H
ZLO  EQU    42H
ZHI  EQU    43H
      MOV    A, X
      MOV    B, Y
      MUL    AB
      MOV    ZLO, A
      MOV    ZHI, B

```

Division (X / Y)

Divides the accumulator by the B SFR and leaves quotient in A and remainder in B.

Unconditional Jump Instructions

Relative Jump (SJMP)

- Fetch instruction (2 bytes)
- Add signed 8-bit offset to PC
 - o Can jump 7F forward (+127)
 - o Can jump 80 Backward (-128)
 - o If SJMP command is at address N
 - Range of (N-126) to (N+129)

Long Jump (LJMP)

16-bit value loaded into program counter. Fetch instruction is 3 bytes.

Absolute Jump (AJMP)

Jump anywhere on same 2kbyte “page”. Operand is an 11-bit value loaded into PC₁₀-PC₀. Note that 2kbytes is 2¹¹.

Special Function Registers

P0-P3

B

MSB for Multiply, remainder for divide instructions

PSW (Program/Processor Status Word)

8-Bit, bit addressable SFR

CY	AC	F0	RSI	RSO	OV	-	P
----	----	----	-----	-----	----	---	---

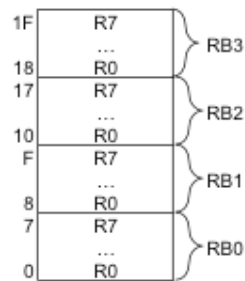
CY – Carry Bit
 AC – Auxiliary Carry (used for BCD math)
 F0 – One bit of storage
 RSI, RSO – Register select
 OV – Overflow. Set when 2's complement operation overflows
 '- ' – unused/unavailable
 P – Accumulator Parity (1 – A is odd parity, 0 – A is even parity)

R0-R7

These reside at the beginning of internal memory. There are four register banks, RB0-RB4. One is active at a time and is specified by RSI and RSO.

RSI	RSO	Bank in Use
0	0	RB0
0	1	RB1
1	0	RB2
1	1	RB3

Following diagram shows how the registers are placed in internal memory.



Conditional Jumps

Loop N Times

```

      MOV   R0, #N
LOOP: .
      .
      .
      DJNZ R0, LOOP
  
```

If N = 0, will loop 256 times (decrements first!)

If N = 1, loops 1 time

If top of loop is too far away, an LJMP is required.

```

Top:  .
      .
      .
      DJNZ R0, Lab1
      SJMP Lab2
Lab1: LJMP Top
Lab2: .
      .

```

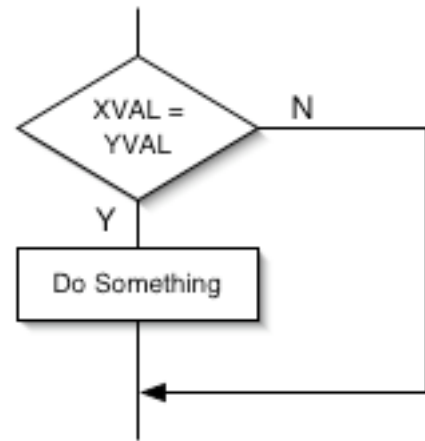
Compare and Jump

Assume XVAL and YVAL are in direct RAM

```

      MOV  A, XVAL
      CJNE A, YVAL, LAB1
      .
      . Do something
      .
LAB1: .
      .

```

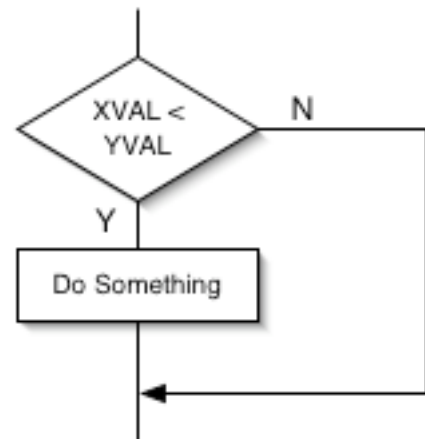


```

CJNE
  if (first operand < second operand)
    C is set to 1
  else
    C is set to 0

      MOV  A, XVAL
      CJNE A, YVAL, Lab1
Lab1: JNC  Lab2
      .
      . Do Something
      .
Lab2: .
      .

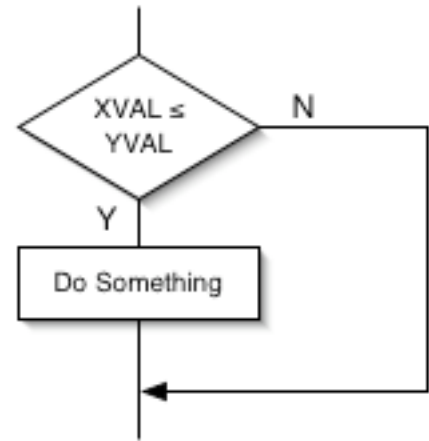
```



```

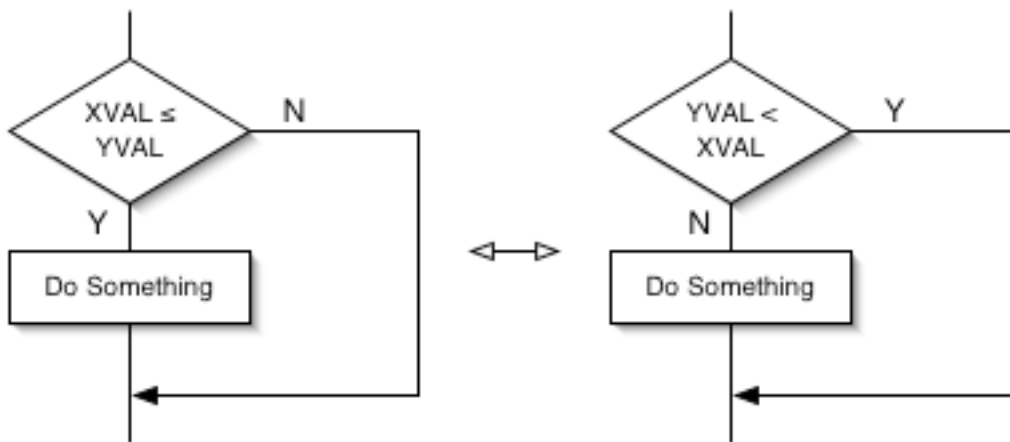
MOV    A, XVAL
CJNE  A, YVAL, Lab1
SJMP  Lab2
Lab1:  JNC   Lab3
Lab2:  .
      .
      .
Lab3:  .
      .

```



Conditional Loop Hints

$X \leq Y$ can be accomplished more easily as $!(Y < X)$. That is...



Subroutines

8051 has a stack to hold return address and maybe other stuff

SP (Stack Pointer)

An 8-Bit value. Contents are an address in indirect internal memory.

```

STACK EQU  90H           ; where stack should start

MOV  SP, #STACK - 1     ; sets the stack pointer 1
                          ; byte below where the stack
                          ; starts. (SP++ first by
                          ; LCALL)

```

LCALL (Long Call)

LCALL Label, where Label is a 16-bit address of a subroutine entry point. Using LCALL does the following.

```
PC    <- PC + 3      (Instruction Fetch – gets LCALL inst.)
SP    <- SP + 1      (Increment SP)
(SP)  <- PC0-7       (Store lo byte of PC in RAM)
SP    <- SP + 1      (Increment SP)
(SP)  <- PC8-15      (Store hi byte of PC in RAM)
PC    <- Destination (Transfer control to subroutine)
```

RET (Return Operation)

Returns from a subroutine. Calling RET does the following.

```
PC8-15 <- (SP)      (Puts value of SP into hi byte of PC)
SP     <- SP – 1     (Decrements SP)
PC0-7  <- (SP)      (Puts value of SP into lo byte of PC)
SP     <- SP – 1     (Decrements SP)
```

Subroutine Example

Negate:

PC	Label	Instruction
0FFF		MOV A, XVAL
1000		LCALL Negate
1003		MOV XVAL, A
.		
.		
3000	Negate:	CPL A
		INC A
		RET

If SP starts at memory location 89, after LCALL, memory location 90 stores 03 and memory location 91 stores 10 (1003 is the value of the PC after the LCALL). The program counter is then set to 3000 where the Negate subroutine runs. When RET is called, the value stored at the SP (memory location 91 - value of 10) is put into the hi byte of the PC. SP is decremented (to memory location 90 – value of 03) and is put into

the lo byte of the PC. SP is then decremented once more and the program continues to run from memory location 1003.

Note: ACALL can be used to call a subroutine anywhere on the same 2-byte page.

More Stuff

Nested DJNZ Loops

Use R0 for low byte of loop count

Use R1 for high byte of loop count

```
Loopcount EQU 1000

MOV R1, #[Loopcount ; init hi byte
MOV R0, #]LoopCount ; init lo byte
MOV A, R0 ; copy lo byte into A
JZ Loop;
INC R1;
Loop: .
      .
      DJNZ R0, Loop ; Loop till LSB = 0
      DJNZ R1, Loop ; Loop till MSB = 0
```

Example. If Loopcount EQU 256 (0100H) it will do the loop 256 times

External Data Memory Access

Two SFRs involved

- DPL (Data Pointer Low)
- DPH (Data Pointer High)

Together, these form DPTR (Data Pointer) which is 16-Bits large

```
MOV DPTR, #Some 16-Bit value
INC DPTR ; 16-bit increment
```

If you want to do separately:

```
MOV DPH, #[some_16_bit_value
MOV DPL, #]some_16_bit_value
```

Read and write:

```
MOVX @DPTR, A    ; write into spot of external memory
MOVX  A, @DPTR   ; read into accumulator
```

Code Memory Access

Used for lookup tables

```
MOVC  A, @A + DPTR ; @A is 8-bit unsigned
Or    ; DPTR is 16-bit
MOVC  A, @A + PC
```

Example: Hex to ASCII conversion

- Enter with 4-bit value in Accumulator
- Leave with ASCII equivalent

```
; Hex to ASCII Conversion
```

```
        ANL  A, #0FH          ; clear upper nibble
        ADD  A, #Table - Lab  ; see note 1
        MOVC A, @A + PC
LAB:
        RET
```

```
Table: DB '01234567890abcdef'
```

Note 1: if Lab is at 0114, and table is at 0115, then
Table-Lab = 1

Note 2: table must be < 256 bytes away from MOVC, also must
be below the MOVC instruction

If Table is above or is far away, then must be...

```
Table:      DB      '01234567890ABCDEF'      ; the data
            ANL     A, #0FH
            MOV     DPTR, #Table
            MOVC   A, @A + DPTR
            .
            .
            .
            RET
```

Note: this is easy, but requires you to use the data pointer.

Timers

TMOD

				GATE	C/T'	M1	M0
--	--	--	--	------	------	----	----

GATE – if set, Timer/Counter x will run while INTx pin is high (hardware control)
if cleared, timer/counter x will run only while TRx is high (software control)

C/T' – Timer or counter selector. Cleared for timer operation, set for counter

M1 – Mode selector bit

M0 – Mode selector bit

TCON

TF1	TR1	TF0	TR0	IE1	IT1	IE0	IT0
-----	-----	-----	-----	-----	-----	-----	-----

TF1 – Timer 1 overflow flag. Set by timer/counter 1 overflows, cleared by hardware as processor vectors to the interrupt service routine.

TR1 – Timer 1 run control bit. Set/cleared by software to turn timer/counter 1 on/off

TF0 – Timer 0 overflow flag. Set by timer/counter 0 overflows, cleared by hardware as processor vectors to the interrupt service routine.

TR0 – Timer 0 run control bit. Set/cleared by software to turn timer/counter 0 on/off

IE1 – external interrupt 1 edge flag. Set by hardware when external interrupt edge is detected. Cleared by hardware when interrupt is processed

IT1 – Interrupt 1 type control bit. Set/Cleared by software to specify falling edge/low level triggered External interrupt

IE0 – external interrupt 0 edge flag. Set by hardware when external interrupt edge is detected. Cleared by hardware when interrupt is processed

IT0 – Interrupt 0 type control bit. Set/Cleared by software to specify falling edge/low level triggered External interrupt

Timer Mode 0

(M1 = 0, M0 = 0)

13-bit Timer (8048 Compatible)

Timer Mode 1

(M1 = 0, M0 = 1)

16-bit Timer/Counter

if FFFF -> 0000

- set TF
- does not stop or reload counter

Ex) Make an interrupt every 10msec

```

        MOV    IE,    #82H
        MOV    TMOD, #01H        ; Ungated mode 1 timer
Timer0_uSec EQU 10000          ; 10000 usec = 10 msec
        MOV    TH0,  #[-Timer0_uSec
        MOV    TL0,  #]-Timer0_uSec
        SETB  TR0

        ORG 000BH
TheInterrupt:
        PUSH  PSW
        PUSH  ACC
        (CLR  EA) <- Necessary if higher priority interrupts
        CLR   TR0
        MOV   A,  TL0
        ADD  A, #]- (Timer0_uSec - 7)
        MOV  TL0, A
        MOV  A,  TH0
        ADDC A, #]- (Timer0_uSec - 7)
        MOV  TH0, A
        SETB TR0
        (SETB TR0)

```

Timer Mode 2

(M1 = 1, M0 = 0)

8-bit auto-reload timer/counter

- useful for clock division

ex) Get TF0 to set every 250 μ seconds

assume 12Mhz osc, $12\text{Mhz}/12 = 1\text{Mhz}$, therefore count 250 then reload

```

        MOV    TMOD, #02H    ; sets bottom bit of TMOD to 0010
        MOV    TH0, #-250
        MOV    TL0, #-250
        SETB  TR0

```

Timer Mode 3

(M1 = 1, M0 = 1)

- Timer 1 stops (like TR1 being cleared)
- TL0 is an 8-bit Timer/Counter controlled by the standard Timer 0 control bits.
TH0 is an 8-bit timer and is controlled by Timer 1 control bits

Same stuff as Mode 2, but

TL0 – like Mode 0/1 but only 8-bit

TH0 – Timer only

- Use TF1, TR1 for 1/2 Timer 0

Serial Input Output

Three Errors

Parity Error

- Incorrect number of 1s
- 8e1 – 8 data bits, even parity, 1 stop bit
- 8o1 – 8 data bits, odd parity, 1 stop bit
- 8n1 – 8 data bits, no parity, 1 stop bit
- 7e1 – 7 data bits, even parity, 1 stop bit

Overrun Error

- another character is received before the first one is read from the SBUF

Framing Error

- Transmitter, instead of sending stop bit, keeps the line low (Space) for at least 1 character timer to signal some exceptional condition.
- Is a break condition

SCON

SM0	SM1	SM2	REN	TB8	RB8	TI	RI
-----	-----	-----	-----	-----	-----	----	----

SM0 – Serial port mode specifier

SM1 – Serial port mode sepecifier

SM2 – Enables the multiprocessor communication feature in modes 2&3. In mode 2 or 3, if SM2 is set to 1, then RI will not be activated if the received 9th bit (RB8) is 0. In mode 1, if SM2 = 1, then RI will not be activated if a valid stop bit was not received. In mode 0, SM2 should be 0.

REN – Set/Cleared by software to enable/disable reception

TB8 – The 9th bit that will be transmitted in modes 2&3. Set/Cleared by software

RB8 – In modes 2&3, is the 9th data bit that was received. In mode 1, if SM2 = 0, RB8 is the stop bit that was received. In mode 0, RB8 is not used.

TI – Transmit interrupt flag. Set by hardware at the end of the 8th bit time in mode 0, or at the beginning of the stop bit in the other modes. Must be cleared by software.

Serial Mode 0

SM0 = 0, SM1 = 0

- No start/stop bits
- Separate clock/data
- Synchronous
- Baud Rate = Frequency of osc/12
- For 8051 <-> 8051 communication
- 8051 <-> serial peripheral

Serial Mode 1

SM0 = 0, SM1 = 1

SM2

- If set, then RI will be set only if 9th bit received is a 1 (mark)
- If SM2 = 0, then RI will be set regardless of state of 9th bit

- 8 bit asynchronous serial I/O
- most used
- bit rate is controlled by timer1

$$BaudRate = \frac{K \cdot OscFreq}{32 \cdot 12 \cdot (256 \square TH1)}$$

If SMOD = 0, then K = 1

If SMOD = 1, then K = 2 (SMOD is in the PCON register)

Most of the time the user knows the baud rate and needs to know the reload value for TH1.

$$TH1 = 256 \square \frac{K \cdot OscFreq}{384 \cdot BaudRate}$$

ex) 12Mhz fosc, 2400 bits/sec

Timer 1 overflow freq = ... 32 x 2400 = 76.8kHz

Timer 1 overflow interval = 13.0208μsec

Therefore, set TH1, TL1 to -13

Rate = 12 / (32 * 12 * 13) = 2403.9 bits/sec which is 0.16% too fast

To get 4800 bits/sec, set SMOD to 1, then

Rate = 12 / (16 * 12 * 13) = 4807.8

To get 9600 bits/sec...? Not possible! Can't set TH1 to 6.5!

A common clock speed is 11.059 Mhz

- Allows 19.2kbits/sec with SMOD = 1, TH1 = 3, but 1.08509μsec/machine code

How to use:

- 1) Set Timer 1 to 8-bit autoreload ungated
- 2) Set TH1/TL1 to select bit rate
- 3) Set TR1
- 4) Set up SCON (MOV SCON, #52H)

```

Getchar:
    JNB  RI,  Getchar
    CLR  RI
    MOV  A,   SBUF
    RET

```

```

Putchar:
    JNB  TI,  Putchar
    CLR  TI
    MOV  SBUF, A
    RET

```

TI = 0, Transmitter is busy

TI = 1, Transmitter is ready

The preceding were 8n1 subroutines – 8 bits, no parity, 1 stop bit

The following are 7e1 subroutines – 7 bits, even parity, 1 stop bit

```

Putchar:
    CLR  ACC.7
    MOV  C,   P      ; P = 1, if Acc has odd parity
    MOV  ACC.7      ; Acc now has even parity
Loop:  JNB  TI,  Loop
    CLR  TI
    MOV  SBUF, A
    RET

```

```

Getchar:
    JNB  RI,  Getchar
    CLR  RI
    MOV  A,   SBUF
    JB   P,   Badchar
    CLR  ACC.7      ; get rid of parity bit
    RET

```

For 7o1, for Getchar, change JB to JNB

, for Putchar, complement c before moving to ACC.7

or, SETB ACC.7 instead of clr

Interrupts

Hardware-initiated subroutine call

5 sources of interrupts in 8051:

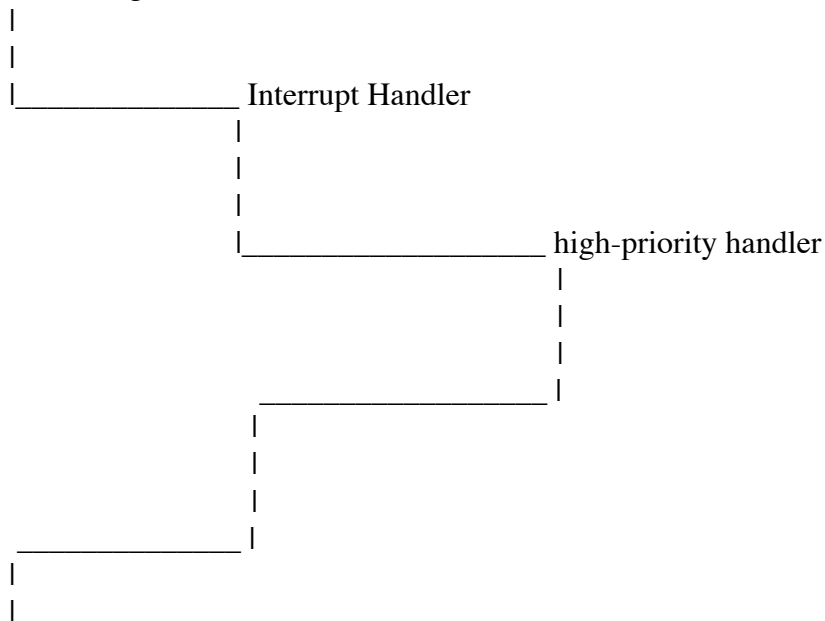
TFO

TF1
 RI or TI
 EX0 : State of I/O pins
 EX1

2 Timer
 1 serial
 2 external

IE – Interrupt enable
 IP – Interrupt priority
 - Interrupts have HI or lo priority

Main Program



IE Register:

EA	-	-	ES	ET1	EX1	ET0	EX0
----	---	---	----	-----	-----	-----	-----

EA – Disables all interrupts. If EA=0, no interrupt will be acknowledged. If EA = 1, each interrupt source is individually enabled or disabled by setting or clearing its enable bit

Two unused - User software should not write 1s to reserved bits. May be used in future.

ES – Enable or disable the serial port interrupt

ET1 – Enable or disable the Timer 1 overflow interrupt

EX1 – Enable or disable External Interrupt 1

ET0 – Enable or disable the Timer 0 overflow interrupt

EX0 – Enable or disable External Interrupt 0

For Interrupt request to be sent to the processor,

- 1) Interrupt source = true

- 2) Corresponding individual interrupt enable = 1
- 3) Overall enable = 1

If all these are true, get:
 Hardware-initiated LCALL to
 Interrupt handler at specified Vector Address

External 0 – LCALL to location 0003

Timer 0 – 000B

External 1 – 0013

Timer 1 – 001B

Serial 1 – 0023

Programs should look like this:

```

ORG    0000
LJMP   Startup
ORG    0003

```

Ex) Produce a 2kHz square wave on P2.0 as well as continue to process some other application

Need to use interrupts!

- Assume 12Mhz xTal
- Use timer 0 to produce an interrupt every 250μsec
- Complement P2.0 in handler

Startup:

```

MOV    TMOD, #02H    ; Timer 0, timer, ungated, mode 2
MOV    TH0, #6       ; reinput 6
MOV    TL0, #6       ; initial at 6
MOV    IE, #82H     ; enable timer 0 interrupt
SETB   TR0          ; start timer

```

Low Code Memory

```

ORG    0000H
LJMP   Startup
ORG    000BH
Timer0Handler:
CPL    P2.0
RETI                   ; Return from interrupt

```

Rules for Interrupt

Interrupts are sampled at the end of each machine cycle (ie, every $1\mu\text{sec}$ with $F_{osc} = 12\text{Mhz}$)

If flag is in SET condition, the interrupt system will cause an LCALL to the appropriate address provided the LCALL (Interrupt acknowledge) is not blocked by any of the following conditions:

- 1) An interrupt at equal or higher priority is already in progress
- 2) The current cycle is not the last cycle of an instruction
- 3) The instruction in progress is a RETI or any write to IP or IE SFRs

IF (an interrupt request is active but not responded to for one of the listed reasons) AND
(IF the request is not still active when all blocking conditions are removed)
THEN

The interrupt will NOT occur
No memory that request was active

Look Out

Interrupts do NOT save any registers – does not save PSW, Acc, etc
Programmer is responsible for saving and restoring all resources used in the interrupt handler

```
PUSH  dir          ; Pushes contents at a specified
                   location onto the stack
                   SP <- SP +1
                   @SP <- dir
POP    dir          ; Gets the contents from stack
```

```
STACK DATA 80H
MOV   SP, #(STACK - 1) ; Puts the stack at 80H
```

Typical Handler:

```
ORG  001BH
PUSH PSW
PUSH ACC
...
POP  ACC
POP  PSW
RETI
```

Get new register banks, set PSW for RB0 – RB3, good idea for interrupt. Restore register banks at the end

IE – Interrupt Enable

IP – Interrupt Priority

External Interrupt

- Source is port 3 pins (p3.2, p3.3)
- Level or edge triggered (Interrupt request as long as pin is low / falling edge causes interrupt request)

TCON

EA	-	-	ES	ET1	EX1	ET0	EX0
----	---	---	----	-----	-----	-----	-----

IT0 – Type of external interrupt 0

0 – level

1 – edge

IE0 – Interrupt edge 0

- Set by hardware on falling edge of input signal
- Cleared by software or by external interrupt 0 acknowledge

P3.0 – serial data receive

P3.1 – serial data transmit

P3.2 – external interrupt 0 or timer 0 gate

P3.3 – external interrupt 1 or timer 1 gate

P3.4 – timer 0 counter input

P3.3 – timer 1 counter input

Software Interrupt

- useful for testing
- simulate presence of external hardware
- software sets appropriate flag
 - o ex) SETB TF0

Ex) to generate software interrupt for external 0 or 1

Set edge triggered mode IT0 or IT1

Set interrupt flag SETB IE0

Or

If using level-triggered, software sets external interrupt pin to 0

CLR P3.2

Ex) Triggering slower timed events

Use timer 0 in mode 2 to generate high priority interrupts at 4kHz

TMOD <- 02H

TH0/TL0 <- (-250)

IP <- 02H

IE <- 82H

TR0 <- 1

We also have code to be run once per second. Have Timer 0 handler update a 16-bit value:

- initial value = -4000
- increment each TFO interrupt
- when = 0
 - o set flag-> SETB IE0
 - o set variable = -4000

```
ORG    000BH
PUSH   PSW
PUSH   ACC
MOV    A, TcountLo
ADD    A, #1
MOV    TcountLo, A
MOV    A, TcountHi
ADDC   A, #0
MOV    TcountHi, A
ORL    A, TcountLo
JNZ    NotOneSecond
MOV    TcountLo, #]-4000
MOV    TcountHi, #[-4000
SETB   IE0
```

NotOneSecond:

```
..
.. rest of 4kHz code
POP    ACC
POP    PSW
RETI

ORG    0003H
LJMP   OneSecond
```